



Implementation of an ED-based Rapid Brain-Attack Triage Algorithm in a Regional Tele-stroke network positively impacts treatment rates for Acute Ischemic Stroke patients.

Ryan Gianatasio, MD, Sherman Chen, MD, Paul Hansen, MD, Parita Bhuvu, MD, Mark Murray, MD, Alexander Venizelos, MD, John Myers, MD, Stewart Coffman, MD, MBA, John Saad, MD, Chris Finale, MD, Brandon Meek, DO, Tracy Oberg, MD, Matt Bush, MD, Scott Robins, MD, Anita Guthmann, RN, BS, Debbie Roper, RN MSN, Mark Whitley, MHA, Vallabh Janardhan, MD.



Texas Stroke Institute, HCA North Texas Division, Dallas-Fort Worth Metroplex, Texas

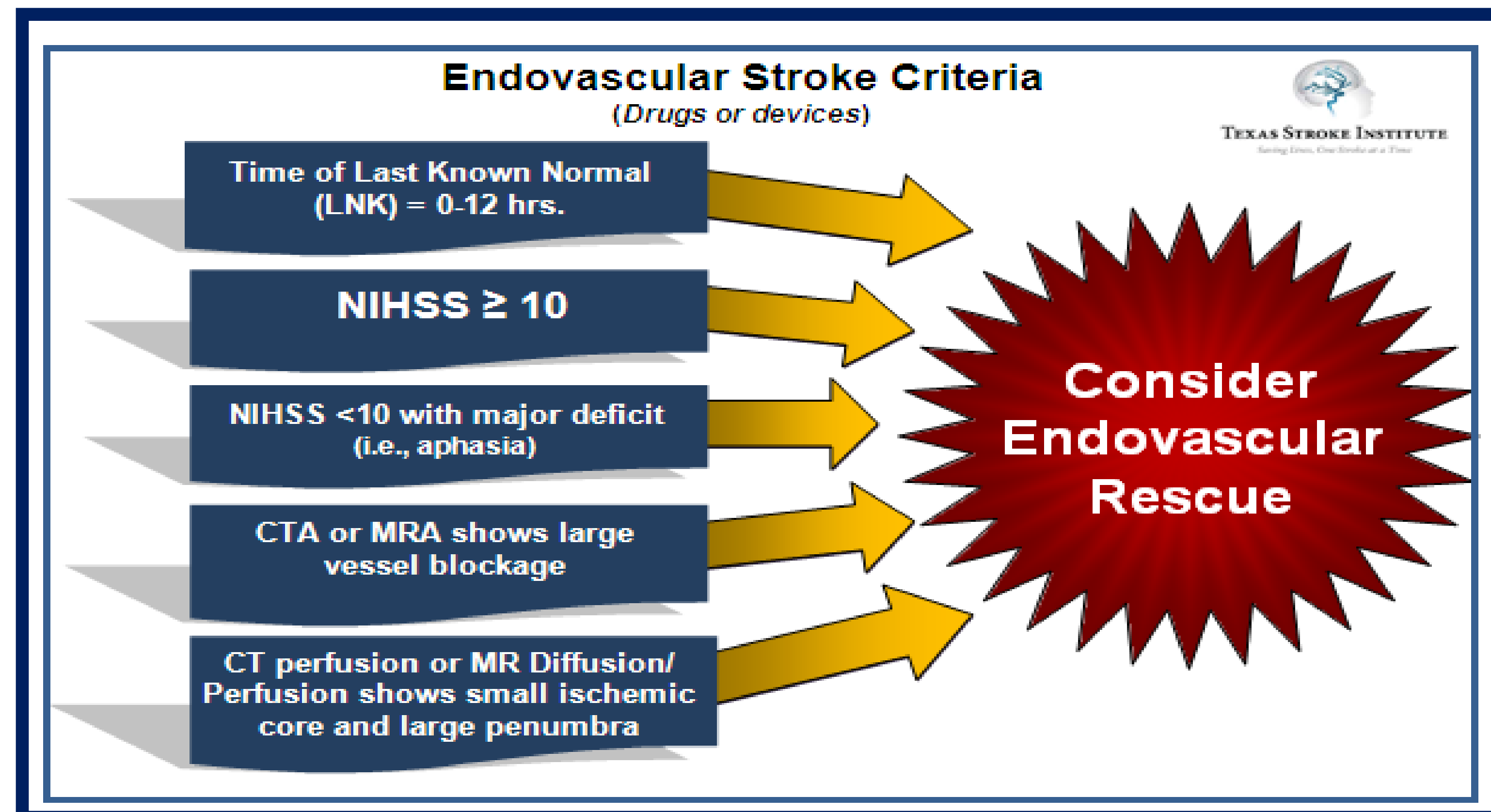
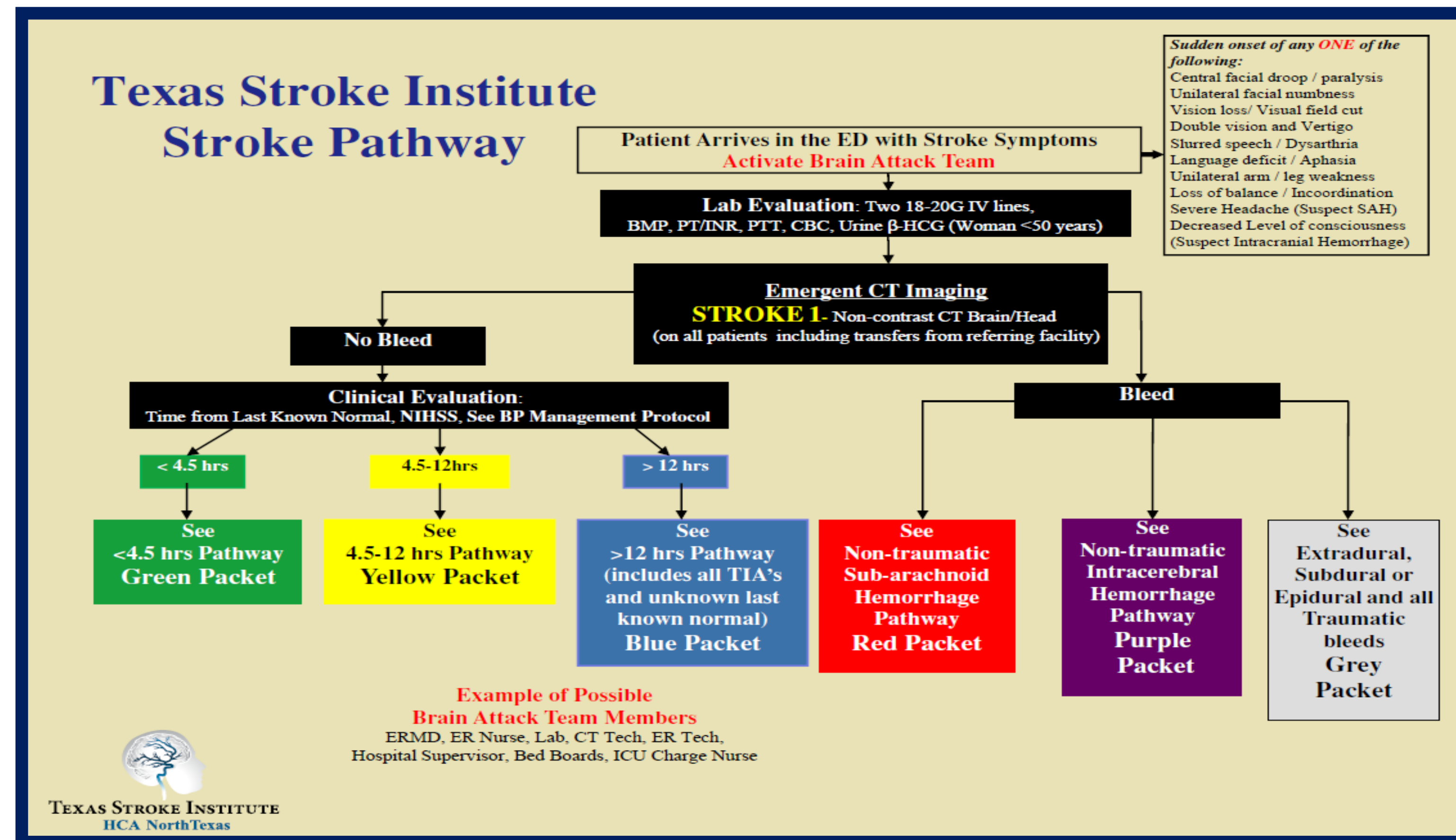
INTRODUCTION

A simplified algorithm for evaluating and triaging brain-attack patients in the emergency department (ED) similar to heart-attack patients can potentially improve treatment rates.

METHODS

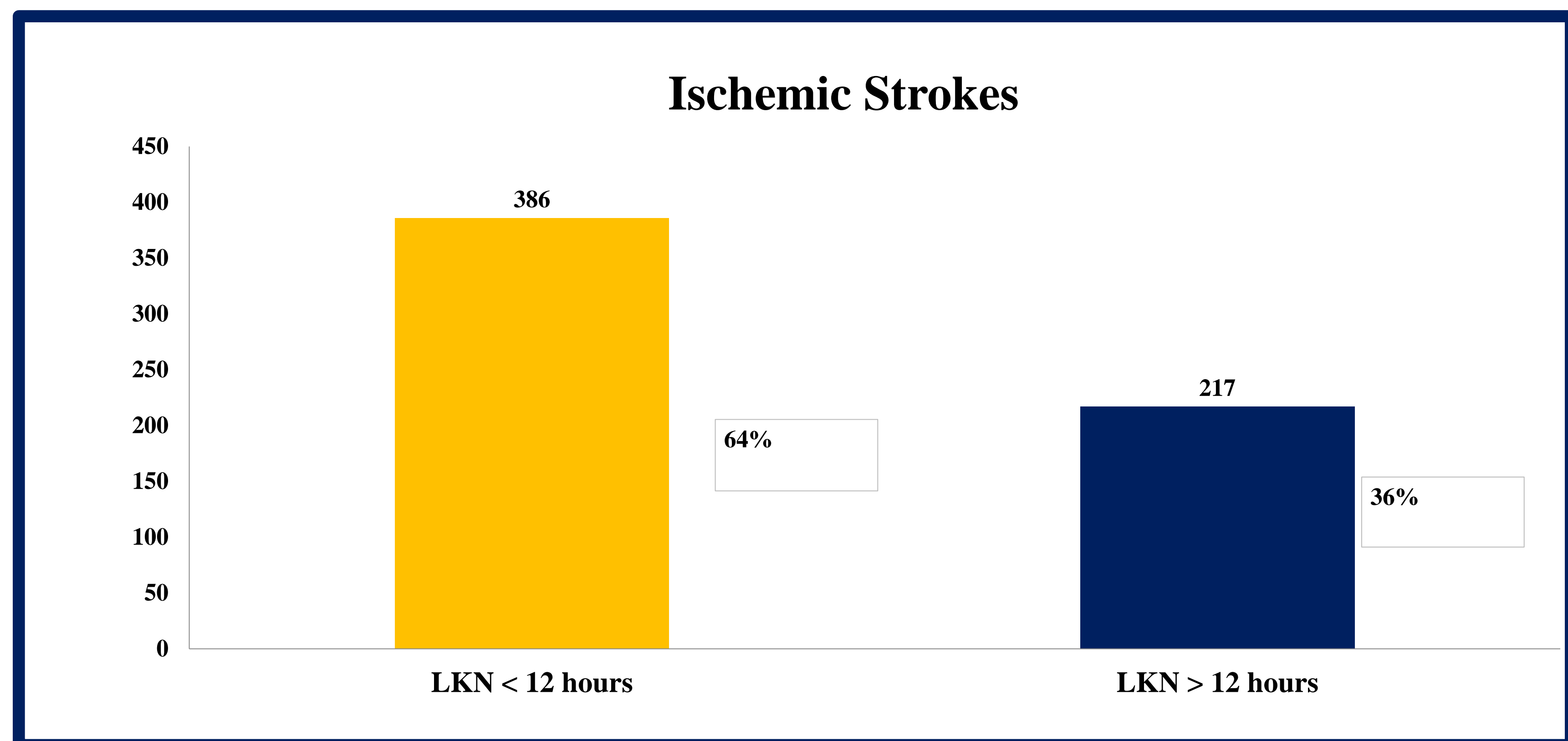
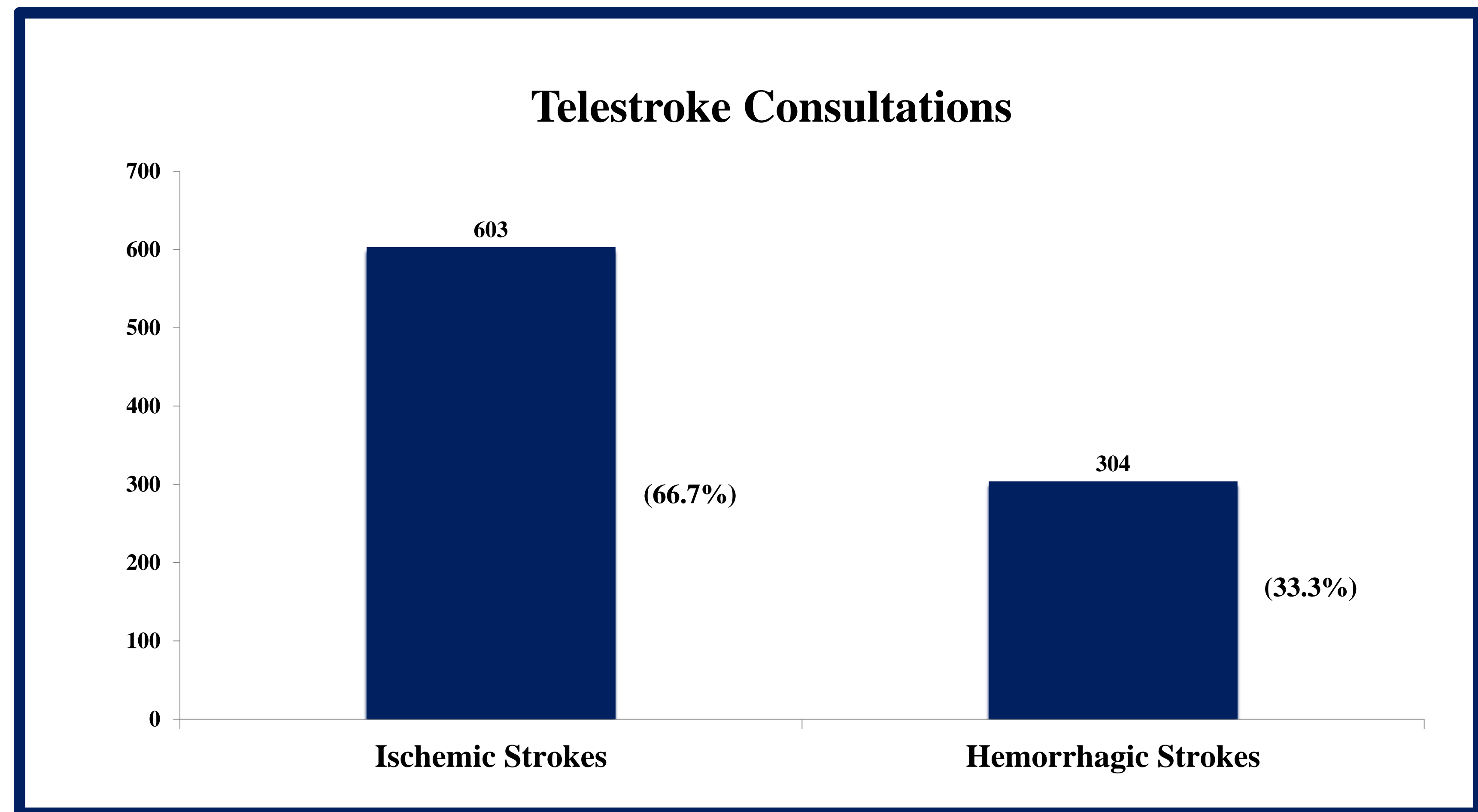
A simplified 2-step ED-based Rapid Brain-Attack Triage Algorithm was developed. The first step includes a non-contrast head CT to distinguish a hemorrhagic stroke from an ischemic stroke. The second step includes identifying the “last known normal (LKN)”. The Texas Stroke Institute Rapid Brain-Attack Triage Algorithm was implemented for all Tele-stroke consultations within the regional stroke network. Data was prospectively collected for a 1-year period from January to December.

TEXAS STROKE INSTITUTE NETWORK

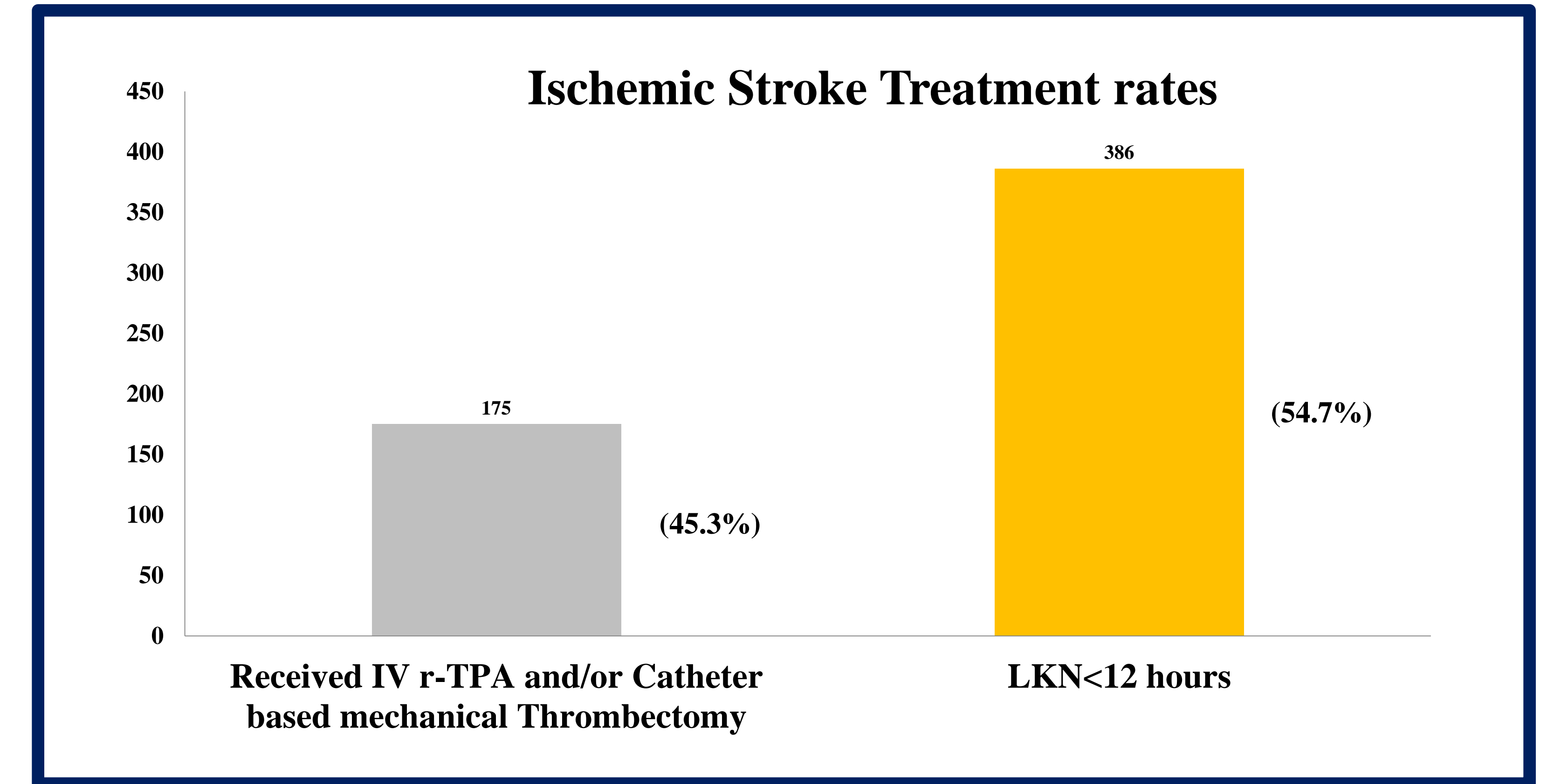


RESULTS

A total of 907 Tele-stroke consultations were performed either via the Telephone or via the Camera. Two-thirds were ischemic stroke patients (603/907; 66.7%) and one-third were hemorrhagic stroke patients (304/907; 33.3%). Among the ischemic stroke patients, 64% (386/603) presented within 12 hours from LKN and 45.3% (175/386) received either intravenous r-tPA and/or catheter based mechanical thrombectomy.



RESULTS CONTINUED



DISCUSSION

A simplified ED-based Rapid Brain-Attack Triage Algorithm as part of a regional Tele-stroke Network is feasible and helps significantly increase treatment rates in patients with acute ischemic stroke. This system has helped identify patients early and initiates the ER physician to stroke specialist dialog. This team approach, along with labs and imaging, has lead to an increased treatment rate for those patients with acute ischemic stroke syndromes in our network.

REFERENCES

Texas Stroke Institute Registry

Schwamm LH, Holloway RG, Amarenco P, Audebert HJ, Bakas T, Chumbler NR, Handschu R, Jauch EC, Knight WA 4th., Levine SR, Mayberg M, Meyer BC, Meyers PM, Skalabrini E, Wechsler LR; American Heart Association Stroke Council; Interdisciplinary Council on Peripheral Vascular Disease. A review of the evidence for the use of telemedicine within stroke systems of care: a scientific statement from the American Heart Association/American Stroke Association. Stroke.2009;40:2616–2634.

Acker JE 3rd., Pancioli AM, Crocco TJ, Eckstein MK, Jauch EC, Larrabee H, Meltzer NM, Mergendahl WC, Munn JW, Prentiss SM, Sand C, Saver JL, Eigel B, Gilpin BR, Schoeberl M, Solis P, Bailey JR, Horton KB, Stranne SK: American Heart Association; American Stroke Association Expert Panel on Emergency Medical Services Systems, Stroke Council. Implementation strategies for emergency medical services within stroke systems of care: a policy statement from the American Heart Association/American Stroke Association Expert Panel on Emergency Medical Services Systems and the Stroke Council. Stroke.2007;38:3097–3115.

Alberts MJ, Latchaw RE, Selman WR, Shephard T, Hadley MN, Brass LM, Koroshetz W, Marler JR, Booss J, Zorowitz RD, Croft JB, Magnis E, Mulligan D, Jagoda A, O’Connor R, Cawley CM, Connors JJ, Rose-DeRenzy JA, Emr M, Warren M, Walker MD; Brain Attack Coalition. Recommendations for comprehensive stroke centers: a consensus statement from the Brain Attack Coalition. Stroke.2005;36:1597–1616.